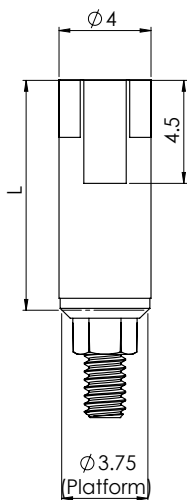



# CAD/CAM Components | Scan Bodies




DESIGN FEATURES	<ul style="list-style-type: none"> <li>• Metal base and PEEK body</li> <li>• Three optional lengths</li> <li>• Implant and Multi-unit</li> </ul>
CLINICAL BENEFITS	<ul style="list-style-type: none"> <li>• Scan as is. No need for anti-reflective coating spray</li> <li>• For use intraorally or with tabletop scanners.</li> <li>• High accuracy</li> <li>• Durable</li> <li>• Autoclavable</li> <li>• Radiopaque fit confirmation to implant/multi-unit</li> <li>• Fit various depth of Gingival tissue.</li> </ul>
MATERIAL	<ul style="list-style-type: none"> <li>• Base: Titanium Alloy (Ti-6Al-4V ELI)</li> <li>• Body: PEEK</li> </ul>

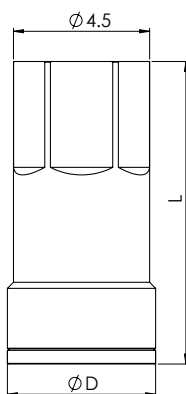



## ORDERING INFORMATION

Implant Scan Body	Ø D (mm)	L (mm)	Ref. No
	4.0	10	NM-C9010

Implant Implant Scan Post	Ø D (mm)	L (mm)	Ref. No
 (*)	4.3	9.8	NM-C2231

(\*) USE SIRONA SCANBODIES FOR CEREC TO PLACE ON THE SCAN POST



Multi-Unit Scan Body	Ø D (mm)	L (mm)	Ref. No
	4.9	10	NM-C9210