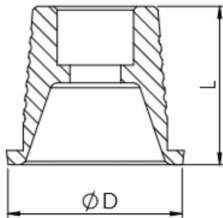


CAD/CAM COMPONENTS | TI-BASES FOR MULTI-UNIT



| | |
|-----------------|---|
| DESIGN FEATURES | <ul style="list-style-type: none"> • Only for screw retained restorations • Large bonding surface for stability and reliable adhesion |
| MATERIAL | Titanium Alloy (Ti-6Al-4V ELI) |



ORDERING INFORMATION

| Multi-Unit Titanium Base | Ø D (mm) | L (mm) | Ref. No |
|--------------------------|----------|--------|---------|
|--------------------------|----------|--------|---------|



4.9

4.5

NM-C7124

| Multi-Unit Titanium Base for Immediate Loading | Ø D (mm) | L (mm) | Ref. No |
|--|----------|--------|---------|
|--|----------|--------|---------|



5.2

4.5

NM-C7126



Included with the product above & available separately

NM-S7102



Noris Medical's CAD/CAM libraries are available for the following software: exocad, 3Shape, Dental Wings and others. The most current libraries can be found in Noris Medical's website.

exocad

3shape

dental wings

RealGUIDE™

hypocad