

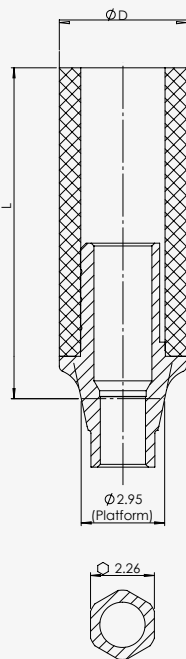
# CEMENT/SCREW RETAINED RESTORATIONS

## COCR CASTABLE ABUTMENTS




DESIGN FEATURES	<ul style="list-style-type: none"> <li>• Castable abutments with plastic press-on sleeve on metal base abutments</li> </ul>
CLINICAL BENEFITS	<ul style="list-style-type: none"> <li>• For fabrication of cement or screw retained abutments</li> <li>• For dentist/technician customization</li> <li>• For crown or bridge restorations</li> </ul>
MATERIAL	Plastic: Delrin Metal base: Cobalt-Chrome Alloy

### ORDERING INFORMATION




CoCr Abutment		
Straight	L (mm)	Ø D (mm)
	11.7	4.5
NMCC2003		

Non-Engage (Non-Hexed) CoCr Abutment		
Straight	L (mm)	Ø D (mm)
	11.7	4.5
NMCC2004		



NGCS7301



Star Head

Included with all abutments & available separately