

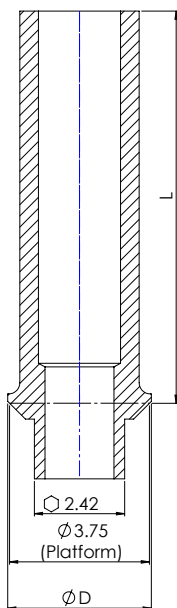
CEMENT/SCREW RETAINED RESTORATIONS





CASTABLE ABUTMENTS



DESIGN FEATURES	<ul style="list-style-type: none"> • Plastic castable abutments and plastic press-on metal base abutments (ucla)
CLINICAL BENEFITS	<ul style="list-style-type: none"> • For fabrication of cement or screw retained abutments • For dentist/technician customization • For crown or bridge restorations
MATERIAL	Plastic: Delrin Metal base: Cobalt-Chrome Alloy

ORDERING INFORMATION



Hexed	Non-Hexed	L (mm)	Ø D (mm)
		10.5	3.8
NM-C1002	NM-C1001		
Co-Cr Base	L (mm)	Ø D (mm)	
	10.5	4.5	
NM-C2002			
	NM-S8324	Included with all abutments & available separately	