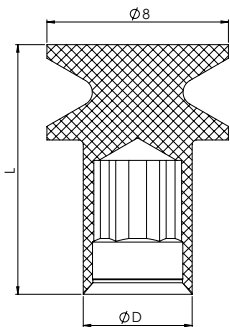
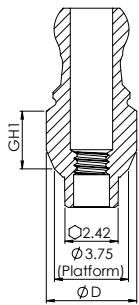








ACCESSORIES | Snap-On Transfer




DESIGN FEATURES	<ul style="list-style-type: none"> • Snap-on cap that snaps on transfer body that screws in to the implant • Designed for impressions using the closed-tray technique, in conjunction with cap T4402 • Transfer body gold color anodization
CLINICAL BENEFITS	<ul style="list-style-type: none"> • Enables closed tray impression transfer • Advantageous in limited opening situations
MATERIAL	<p>Body & Screw: Titanium Alloy (Ti-6Al-4V ELI) Snap-On Cap: Derlin</p>

ORDERING INFORMATION



Transfer	Ø D (mm)	GH1 (mm)
 NM-T3802	4.75	2
 NM-T3803	4.75	3
 NM-T3804	4.75	4
 NM-T3805	4.75	5
 NM-T3806	4.75	6
 NM-S8324	Included with all abutments above & available separately	

Snap-On Cap for Ball Transfer		
Cap	Ø D (mm)	L (mm)
 NM-T4402	4.8	11

