

 NORIS Medical®

NORIS

EZ SMILE™

A SIMPLIFIED AND
PREDICTABLE FULL-ARCH
TREATMENT CONCEPT

Designed for immediate loading,
stability, and full-arch rehabilitation.



NORIS

EZ SMILE™

**ONE PLATFORM.
ONE APPROACH.
FULL-ARCH EXCELLENCE.**

From implant placement to final restoration -
a system designed to work as one.

EZSmile™ is a comprehensive full-arch solution built to streamline treatment and deliver consistent clinical outcomes.

By combining a unified implant platform with a clear surgical and restorative approach, the system enables efficient workflows, precise execution, and reliable results across a wide range of clinical scenarios.

A full-arch solution based on a single restorative platform - from Ø3.75 to Ø5.5.

ONE SYSTEM. ONE KIT. ONE WORKFLOW.

CLINICAL ADVANTAGES:



Unified restorative platform across $\varnothing 3.25$ – $\varnothing 5.5$



One surgical kit for all full-arch procedures



Consistent prosthetic interface throughout the case



Seamless integration with conical MUA

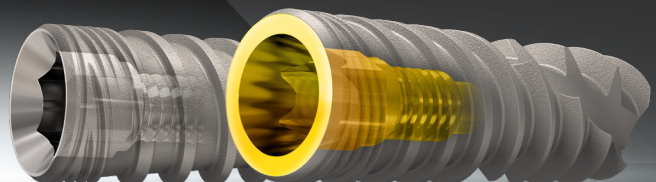


Supports immediate loading protocols



Efficient, reproducible clinical outcomes

ONE SYSTEM. ONE WORKFLOW. ONE SMILE.



TUFF™ UNICON

FEATURES AND CLINICAL BENEFITS

ADVANCED CONICAL CONNECTION FOR MAXIMUM STABILITY AND PRECISION

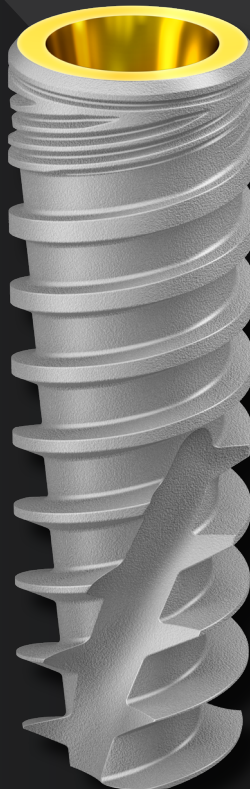
The TUFF™ UNICON implant features a precision-engineered conical platform designed to enhance mechanical stability, optimize load distribution, and support long-term bone and soft tissue preservation.

The conical connection creates a secure, sealed interface between implant and abutment, minimizing micro-movement and enabling predictable esthetic and functional outcomes - particularly in demanding single-tooth restorations.



STRUCTURAL FEATURES

- **Precision conical connection**
for enhanced mechanical stability
- **Platform-switching design**
supporting crestal bone preservation
- **Optimized implant geometry**
for controlled insertion and primary stability
- **Advanced surface treatment**
supporting osseointegration
- Compatible with fully digital and conventional restorative workflows



CLINICAL ADVANTAGES

- **Connection Stability**
Conical interface reduces micro-movement and enhances long-term mechanical integrity.
- **Bone Preservation**
Platform-switching and connection design help maintain crestal bone levels.
- **Soft Tissue Control**
Supports stable soft tissue architecture and predictable esthetic outcomes.
- **Prosthetic Precision**
Provides accurate positioning and long-term restorative reliability.

TUFF™ UNICON

CP | SINGLE IMPLANT DRILLING PROTOCOLS

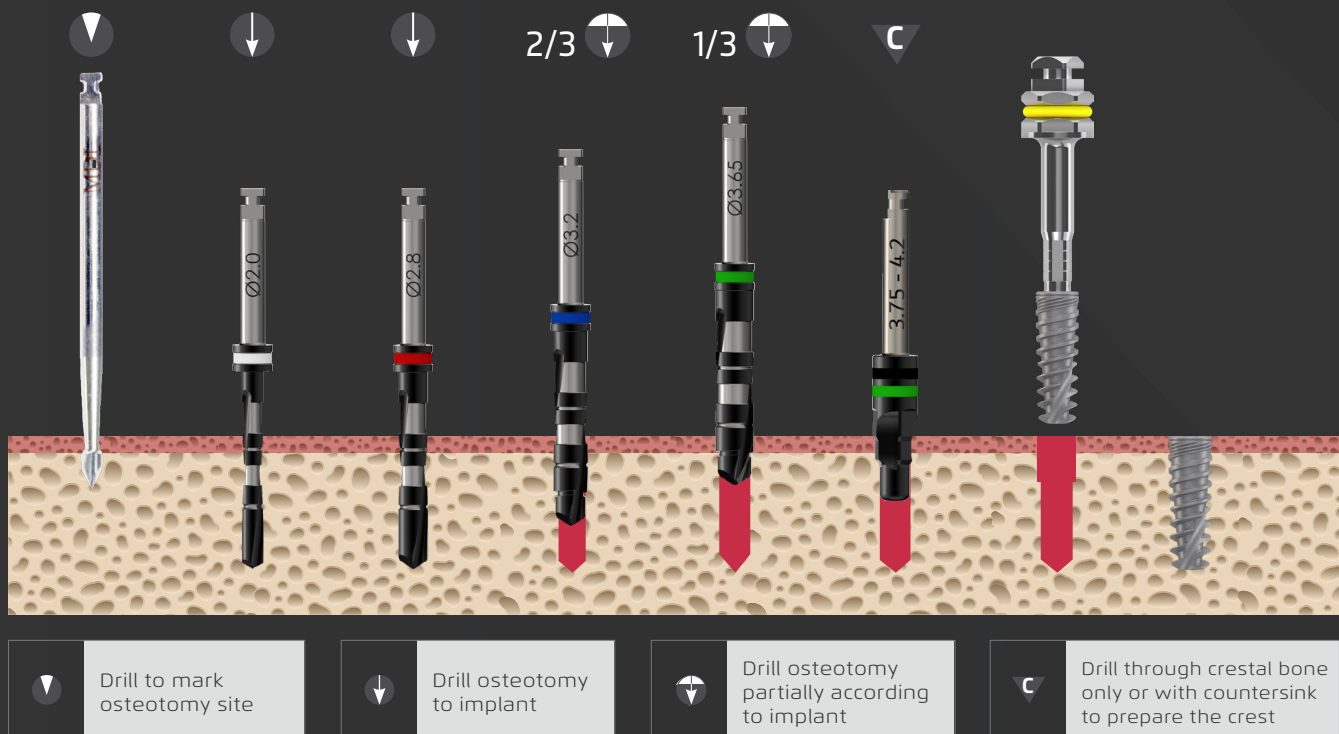
RECOMMENDED DRILL PROTOCOL

Straight and Step Drills

Drill Diameter [mm]	Ø1.9	Ø1.5	Ø2.0	Ø2.8	Ø3.2	Ø3.65	Ø4.2	Ø5.2	ØCS 5-6				
Drill Speed [RPM]	1200-1500	900-1200	900-1200	800-1000	500-700	400-700	400-600	400-600	400-600				
IMPLANT DIAMETER	Ø3.25		Ø3.5		Ø3.75		Ø4.2		Ø5.0		Ø5.5		
	Soft Bone	[Icon: Drill to mark osteotomy site] → [Icon: Drill osteotomy to implant] → [Icon: Drill osteotomy partially according to implant]		[Icon: Drill to mark osteotomy site] → [Icon: Drill osteotomy to implant] → [Icon: Drill osteotomy partially according to implant] → [Icon: Drill through crestal bone only]		[Icon: Drill to mark osteotomy site] → [Icon: Drill osteotomy to implant] → [Icon: Drill osteotomy partially according to implant]		[Icon: Drill to mark osteotomy site] → [Icon: Drill osteotomy to implant] → [Icon: Drill osteotomy partially according to implant] → [Icon: Drill through crestal bone only]		[Icon: Drill to mark osteotomy site] → [Icon: Drill osteotomy to implant] → [Icon: Drill osteotomy partially according to implant] → [Icon: Drill through crestal bone only] → [Icon: Drill through crestal bone only]		[Icon: Drill to mark osteotomy site] → [Icon: Drill osteotomy to implant] → [Icon: Drill osteotomy partially according to implant] → [Icon: Drill through crestal bone only] → [Icon: Drill through crestal bone only]	
	Hard Bone	[Icon: Drill to mark osteotomy site] → [Icon: Drill osteotomy to implant] → [Icon: Drill osteotomy partially according to implant] → 1/3 [Icon: Drill through crestal bone only]		[Icon: Drill to mark osteotomy site] → [Icon: Drill osteotomy to implant] → [Icon: Drill osteotomy partially according to implant] → 2/3 [Icon: Drill through crestal bone only]		[Icon: Drill to mark osteotomy site] → [Icon: Drill osteotomy to implant] → [Icon: Drill osteotomy partially according to implant] → 2/3 [Icon: Drill through crestal bone only]		[Icon: Drill to mark osteotomy site] → [Icon: Drill osteotomy to implant] → [Icon: Drill osteotomy partially according to implant] → [Icon: Drill through crestal bone only] → 1/3 [Icon: Drill through crestal bone only]		[Icon: Drill to mark osteotomy site] → [Icon: Drill osteotomy to implant] → [Icon: Drill osteotomy partially according to implant] → [Icon: Drill through crestal bone only] → 1/3 [Icon: Drill through crestal bone only] → [Icon: Drill through crestal bone only] → Ø5 [Icon: Drill through crestal bone only]		[Icon: Drill to mark osteotomy site] → [Icon: Drill osteotomy to implant] → [Icon: Drill osteotomy partially according to implant] → [Icon: Drill through crestal bone only] → 1/3 [Icon: Drill through crestal bone only] → [Icon: Drill through crestal bone only] → 1/2 [Icon: Drill through crestal bone only]	
	Legend:		[Icon: Drill to mark osteotomy site] Drill to mark osteotomy site		[Icon: Drill osteotomy to implant] Drill osteotomy to implant		[Icon: Drill osteotomy partially according to implant] Drill osteotomy partially according to implant		[Icon: Drill through crestal bone only] Drill through crestal bone only				

- ▲ The recommended drill protocol procedure should not replace the dentist's/surgeon's judgment.
- ▲ The implants may be loaded for immediate function when good primary stability (above 35 Ncm) has been achieved and with appropriate occlusal loading.

Drilling Protocol Legend



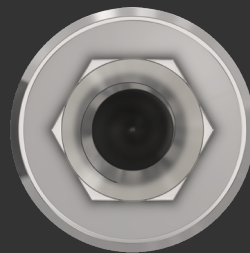
TUFF™

FEATURES AND CLINICAL BENEFITS

TUFF™ IMPLANT — PROVEN CONNECTION. TRUSTED CLINICAL PERFORMANCE.

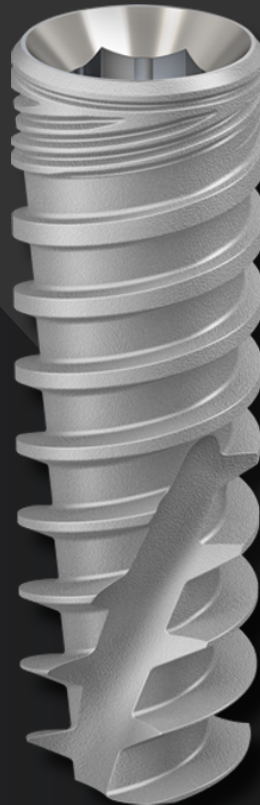
The TUFF™ Int Hex implant system is built on a clinically validated connection concept, offering mechanical reliability, restorative flexibility, and long-term clinical success.

Its internal hex geometry provides a precise and stable interface, supporting a wide range of prosthetic solutions while maintaining predictable surgical and restorative workflows.



STRUCTURAL FEATURES

- **Proven Int hex connections design.**
- **Optimized implant macro-geometry for primary stability**
- **Precision machining for accurate implant–abutment fit**
- **Compatible with a wide range of prosthetic solutions**
- **Designed for both conventional and digital workflows**



CLINICAL ADVANTAGES

Proven Reliability

Int hex connections with extensive clinical validation.

Restorative Flexibility

Supports multiple restorative options and workflows.

Clinical Predictability

Enables consistent and reproducible clinical outcomes.

Workflow Compatibility

Integrates seamlessly with existing clinical and laboratory systems.

RECOMMENDED DRILL PROTOCOL

Straight Drill Protocol

Drill Diameter [mm]		Ø1.9	Ø2.0	Ø2.8	Ø3.2	Ø3.65	Ø4.2	Ø5.2	ØCS 5-6
Drill Speed [RPM]		1200-1500	900-1200	800-1000	500-700	400-700	400-600	400-600	400-600
Ø3.3	Soft Bone	▼	▼						
	Hard Bone	▼	▼	▼	▼	▼	▼	▼	▼
Ø3.75	Soft Bone	▼	▼	▼	▼				
	Hard Bone	▼	▼	▼	▼	▼	▼	▼	▼
Ø4.2	Soft Bone	▼	▼	▼	▼	▼	▼	▼	▼
	Hard Bone	▼	▼	▼	▼	▼	▼	▼	▼
Ø5.0	Soft Bone	▼	▼	▼	▼	▼	▼	▼	▼
	Hard Bone	▼	▼	▼	▼	▼	▼	▼	▼
Ø6.0	Soft Bone	▼	▼	▼	▼	▼	▼	▼	▼
	Hard Bone	▼	▼	▼	▼	▼	▼	▼	▼

Step Drill Protocol

Drill Diameter [mm]		Ø1.9	Ø2.0	Ø2.8	Ø3.2	Ø3.65	Ø4.2	Ø5.2	ØCS 5-6
Drill Speed [RPM]		1200-1500	900-1200	800-1000	500-700	400-700	400-600	400-600	400-600
Ø3.3	Soft Bone	▼	▼						
	Hard Bone	▼	▼	▼	▼	▼	▼	▼	▼
Ø3.75	Soft Bone	▼	▼	▼	▼				
	Hard Bone	▼	▼	▼	▼	▼	▼	▼	▼
Ø4.2	Soft Bone	▼	▼	▼	▼	▼	▼	▼	▼
	Hard Bone	▼	▼	▼	▼	▼	▼	▼	▼
Ø5.0	Soft Bone	▼	▼	▼	▼	▼	▼	▼	▼
	Hard Bone	▼	▼	▼	▼	▼	▼	▼	▼
Ø6.0	Soft Bone	▼	▼	▼	▼	▼	▼	▼	▼
	Hard Bone	▼	▼	▼	▼	▼	▼	▼	▼

▼	Drill to mark osteotomy site	▼	Drill osteotomy to implant	▼	Drill osteotomy partially according to implant	▼	Drill with countersink to prepare the crest
---	------------------------------	---	----------------------------	---	--	---	---

The recommended drill protocol procedure should not replace the dentist's/surgeon's judgment. The implants may be loaded for immediate function when good primary stability (above 35 Ncm) has been achieved and with appropriate occlusal loading.

TUFF™ INT. HEX

INT HEX FULL ARCH RESTORATION PROTOCOLS

MUA INT. HEX SYSTEM

FULL-ARCH FLEXIBILITY. PROVEN RELIABILITY.

Designed for predictable full-arch rehabilitation, the Noris Medical Internal Hex Multi-Unit Abutment offers a reliable and versatile platform for screw-retained restorations.

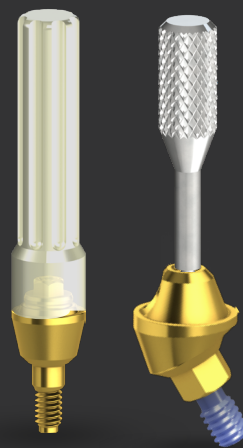
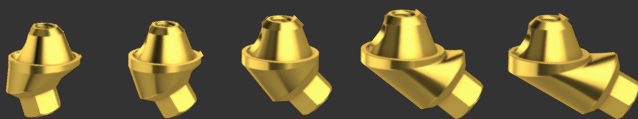
Built on a proven Internal Hex connection, it supports efficient full-arch workflows with flexible prosthetic access, multiple angulations, and compatibility with digital or conventional restorations.

Clinical Advantages:

- Proven Internal Hex stability
- Flexible prosthetic correction
- Wide angulation range
- Multiple gingival heights
- Digital and conventional workflow compatibility

Available Angulations

0° · 17° · 30° · 45° · 52° · 60°



RELIABLE. FLEXIBLE. EFFICIENT.

MUA CP SYSTEM

PRECISION. STABILITY. SOFT TISSUE CONTROL.

Designed for advanced full-arch rehabilitation, the Noris Medical Conical Multi-Unit Abutment provides a stable, sealed, and anatomically refined platform for screw-retained restorations.

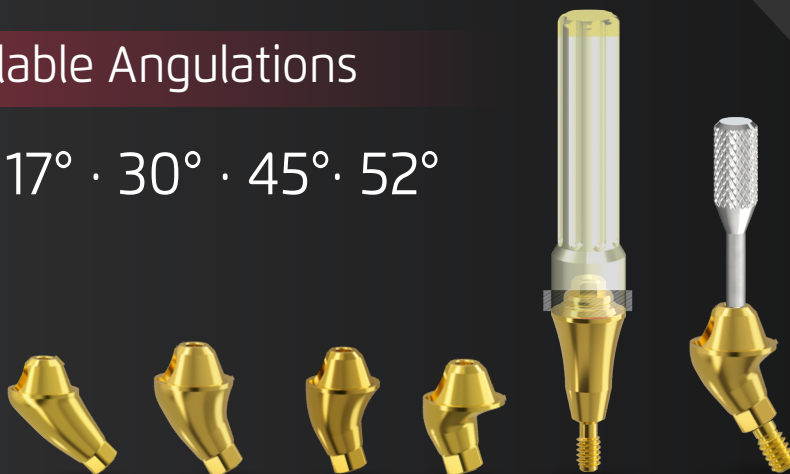
Its conical interface improves prosthetic stability, supports soft tissue adaptation, and enables precise restorative control in demanding full-arch cases.

Clinical Advantages:

- Stable conical connection
- Improved prosthetic seal
- Enhanced soft tissue response
- Anatomical emergence profile
- Precise restorative control

Available Angulations

0° · 17° · 30° · 45° · 52°



STABLE. SEALED. REFINED.

FULL ARCH RESTORATIVE WORKFLOW

TUFF™ CONICAL PLATFORM / TUFF™ INTERNAL HEX FROM SURGERY TO FINAL RESTORATION

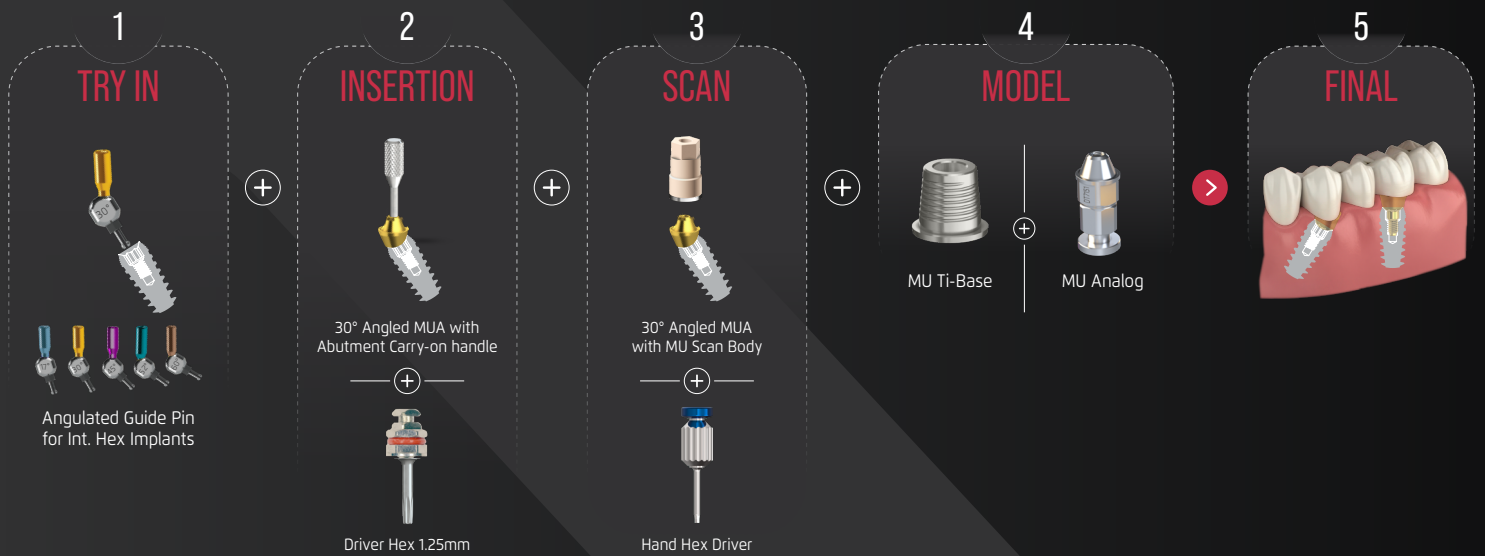
Workflow Steps:

- 1. Implant Placement**
Placement of 4–6 TUFF™ implants for stable full-arch support.
- 2. Prosthetic Platform Connection**
Connection based on selected platform:
 - TUFF™ Conical Platform: Conical MUA (0°–45°) for angulation correction, prosthetic sealing, and platform consistency.
 - TUFF™ Internal Hex: Internal Hex MUA (0°–45°) for angulation correction, restorative flexibility, and reliable full-arch support.
- 3. Immediate Provisionalization (Optional)**
Temporary restoration for immediate loading, based on clinical stability.
- 4. Impression / Digital Scan**
Accurate digital or conventional impression on the prosthetic platform.
- 5. Prosthetic Design & Fabrication**
CAD/CAM fabrication of titanium bar, hybrid, or zirconia full-arch prosthesis.
- 6. Final Restoration Delivery**
Delivery of screw-retained full-arch restoration with optimized fit, function, and esthetics.

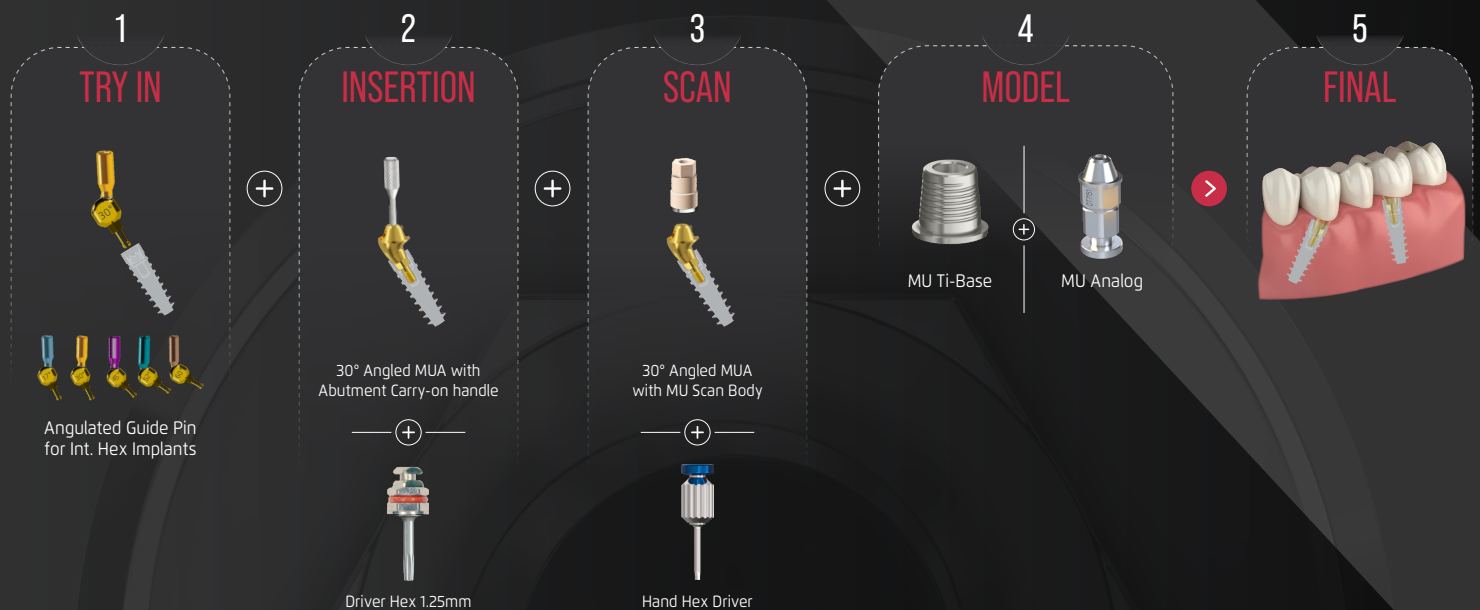
ONE WORKFLOW. TWO CONNECTIONS.
FULL-ARCH CONFIDENCE.

EZ SMILE WORKFLOW

MUA Internal Hex workflow*



MUA Conical Connection workflow*



*Example

ONE SMILE.
MULTIPLE CLINICAL PATHS.
ONE INTEGRATED FULL-ARCH SYSTEM.

Contact
Clinical Support



Download
Libraries



Explore
TUFF™ System

