

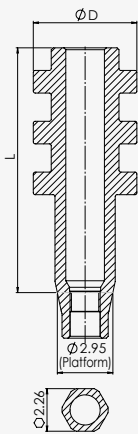
# ACCESSORIES | IMPRESSION TRANSFERS



DESIGN FEATURES	<ul style="list-style-type: none"> <li>• Close Tray and Open Tray</li> <li>• Available in short, high, narrow and wide sizes</li> <li>• Gold anodized to represent Conical Connection platform</li> </ul>
CLINICAL BENEFITS	<ul style="list-style-type: none"> <li>• Open-tray impression transfers for high accuracy</li> <li>• Close-tray impression transfers for places with less space</li> <li>• Non-hexed open-tray impression transfers are designed for transferring multiple angled implants</li> </ul>
MATERIAL	Titanium Alloy (Ti-6Al-4V ELI)

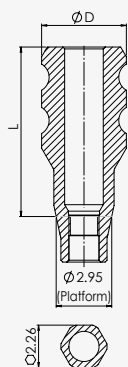
## ORDERING INFORMATION





### Open Tray



Short Transfer			Long Wide Transfer		
Transfer	Ø D (mm)	L (mm)	Transfer	Ø D (mm)	L (mm)
	4.75	9		5.5	13
NGCT4001			NGCT4002		
	Hex Head			Hex Head	
NGCS4002			NGCS4003		

### Close Tray



Short Transfer			Long Slim Transfer			Long Transfer		
Transfer	Ø D (mm)	L (mm)	Transfer	Ø D (mm)	L (mm)	Transfer	Ø D (mm)	L (mm)
	4.5	9		3.85	13		4.5	13
NGCT4101			NGCT4102			NGCT4103		
	Hex Head			Hex Head			Hex Head	
NGCS4001			NGCS4002					

Transfers screws are included with each transfer above & available separately