

# FULL ARCH RESTORATIVE WORKFLOW

TUFF™ CONICAL PLATFORM / TUFF™ INTERNAL HEX  
FROM SURGERY TO FINAL RESTORATION

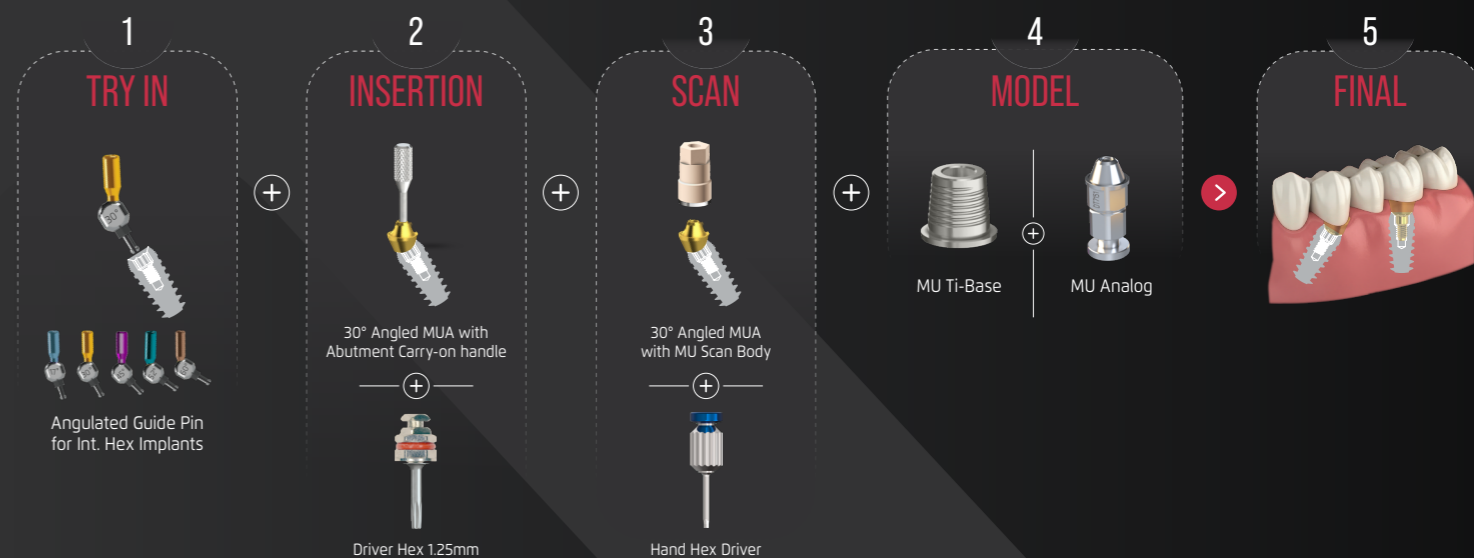
## Workflow Steps:

1. **Implant Placement**  
Placement of 4–6 TUFF™ implants for stable full-arch support.
2. **Prosthetic Platform Connection**  
Connection based on selected platform:
  - TUFF™ Conical Platform: Conical MUA (0°–45°) for angulation correction, prosthetic sealing, and platform consistency.
  - TUFF™ Internal Hex: Internal Hex MUA (0°–45°) for angulation correction, restorative flexibility, and reliable full-arch support.
3. **Immediate Provisionalization (Optional)**  
Temporary restoration for immediate loading, based on clinical stability.
4. **Impression / Digital Scan**  
Accurate digital or conventional impression on the prosthetic platform.
5. **Prosthetic Design & Fabrication**  
CAD/CAM fabrication of titanium bar, hybrid, or zirconia full-arch prosthesis.
6. **Final Restoration Delivery**  
Delivery of screw-retained full-arch restoration with optimized fit, function, and esthetics

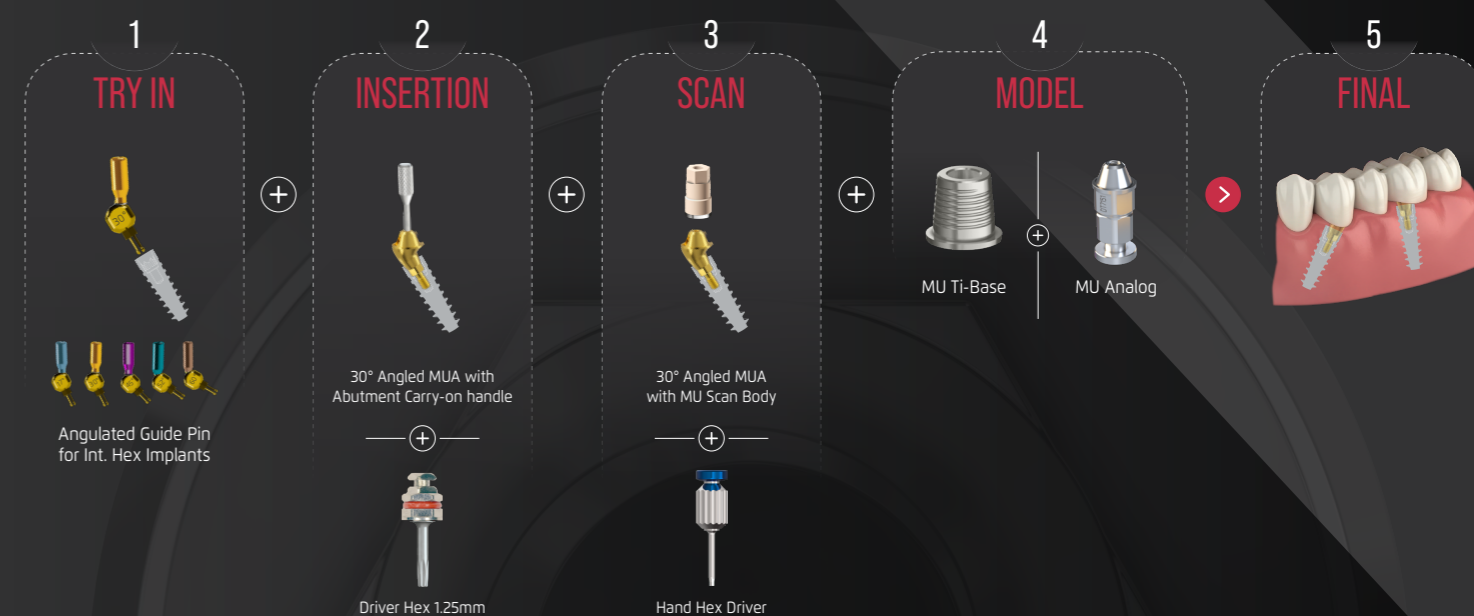
ONE WORKFLOW. TWO CONNECTIONS.  
FULL-ARCH CONFIDENCE.

# EZ SMILE WORKFLOW

MUA Internal Hex workflow\*



# MUA Conical Connection workflow\*



\*Example