



**NORIS Medical®**  
Dental Implant Solutions



# CONICAL CONNECTION IMPLANT SYSTEM **PRODUCT CATALOG**

[www.norismedical.com](http://www.norismedical.com)



## CONICAL CONNECTION IMPLANT SYSTEM

---



## PROSTHETIC PRODUCT LINE

---



## IMPLANT DRIVERS

---



## PREMIUM SURGICAL SET

---

# TABLE OF CONTENTS

## **DENTAL IMPLANT SOLUTIONS**

- 02 REGULATORY COMPLIANCE
- 02 MATERIALS & SURFACE TREATMENT
- 03 IMPLANTS PACKAGING
- 04 TUFF UNICON
- 05 IMPLANTS DRILLING PROTOCOL

## **PROSTHETIC SOLUTIONS**

- 06 PROSTHETIC WORKFLOW

## **ACCESSORIES**

- 08 HEALING CAPS
- 09 IMPRESSION TRANSFERS

## **CEMENT RETAINED RESTORATIONS**

- 10 IMPLANT ANALOGS
- 11 TEMPORARY ABUTMENTS
- 12 CEMENT RETAINED ABUTMENTS

## **OVERDENTURE RESTORATIONS**

- 13 FLAT ATTACHMENTS

## **SCREW RETAINED RESTORATIONS**

- 14 STRAIGHT MULTI-UNIT ABUTMENTS
- 15 ANGLED MULTI-UNIT ABUTMENTS
- 16 MULTI-UNIT COMPONENTS
- 17 MULTI-UNIT DRIVERS
- 18 MULTI-UNIT PROTOCOL

## **INSTRUMENTS**

- 20 DRILLS
- 22 TOOLS
- 23 IMPLANTS DRIVERS
- 24 PROSTHETIC DRIVERS
- 25 MULTI-UNIT DRIVERS
- 26 MANUAL INSTRUMENTS
- 27 GUIDE PINS

## **SURGICAL SETS**

- 28 SURGICAL SETS

## **APPENDICES**

- 30 PRODUCTS LIST

# REGULATORY COMPLIANCE

Noris Medical invests significant resources in creating an optimal environment for the designing and manufacturing of its dental products. Keeping patient safety at the forefront throughout the process, Noris Medical complies with international regulatory compliance for manufacturing and quality. The entire manufacturing process is monitored and recorded for complete process traceability. All facilities are subjected to strict inspection procedures.

- Meticulous quality control system is in compliance with EN ISO 13485:2016 and FDA QSR 21 CFR Part 820.
- Successful MDSAP (Medical Device Single Audit Process) AUDIT are conducted annually. This audit is recognized by United States FDA, Australia TGA, Brazil ANVISA, Canada CMDR.
- ISO 7 clean room production.

# MATERIALS & SURFACE TREATMENT

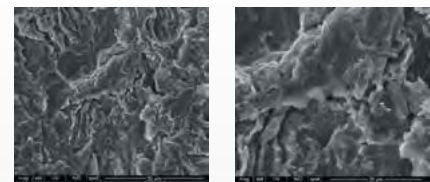
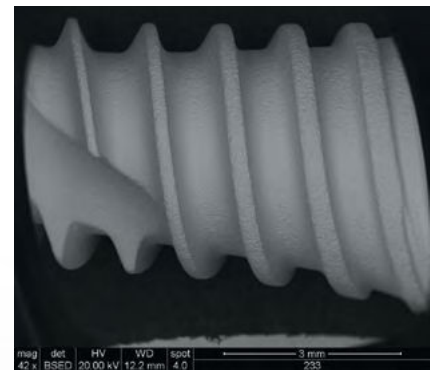
Titanium Alloys are known for their superior biocompatibility and tensile strength. Therefore, all Noris Medical Dental Implants and most prosthetic Components are produced from Titanium Alloy Ti-6Al-4V ELI (Grade 23).

Modification of dental implant surface plays a major role in osseointegration by promoting shorter healing time from implant placement to restoration. Roughened surface provides increased amount of bone to implant contact. The topography, down to the micron, affects the attachment and growth of bone cells on the dental implant, improving BIC - Bone Implant Contact.

Noris Medical applies RBM (Resorbable Blast Media) in order to induce the sub-micron topography.

The material used for the RBM process is Hydroxyapatite, which is a highly resorbable and biocompatible material. Hydroxyapatite as the blasting material also eliminates the need of using strong acids for the removal of blasting material remnants.

Implant surfaces that have been RBM treated are considered to be more osteoconductive. Research shows higher percentage of bone to implant contact around RBM treated implants. This finding could be especially useful in severe clinical conditions like poor bone quality and in cases of early or immediate loading.



## REFERENCES

- McCracken M. Dental implant material: Commercially pure Titanium Alloy and Titanium Alloys. *J Prosthodont* 1999; 8:40-43.
- Schwartz Z, Raz P, Zhao G, Barak Y, Tauber M, Yao H, Boyan BD. Effect of micrometer-scale roughness of the surface of Ti-6Al-4V pedicle screws in vitro and in vivo. *J Bone Joint Surg Am*. 2008; 90:2485-98.
- Piattelli A, Manzon L, Scarano A, Paolantonio M, Piattelli M. Histologic and histomorphometric analysis of the bone response to machined and sandblasted Titanium Alloy implants: An experimental study in rabbits. *Int J Oral Maxillofac Implants*. 1998;13:805-810.
- Piattelli M, Scarano A, Quaranto M, Petrone G, Piattelli A. Bone response in rabbit to machined and RBM Titanium Alloy implants. *J Dent Res*. 1999;78:1126.
- Piattelli M, Scarano A, Paolantonio M, Iezzi G, Petrone G, Piattelli A. Bone response to machined and resorbable blast material Titanium Alloy implants: an experimental study in rabbits. *J Oral Implantol*. 2002;28:2-8.



Product availability may vary between countries.

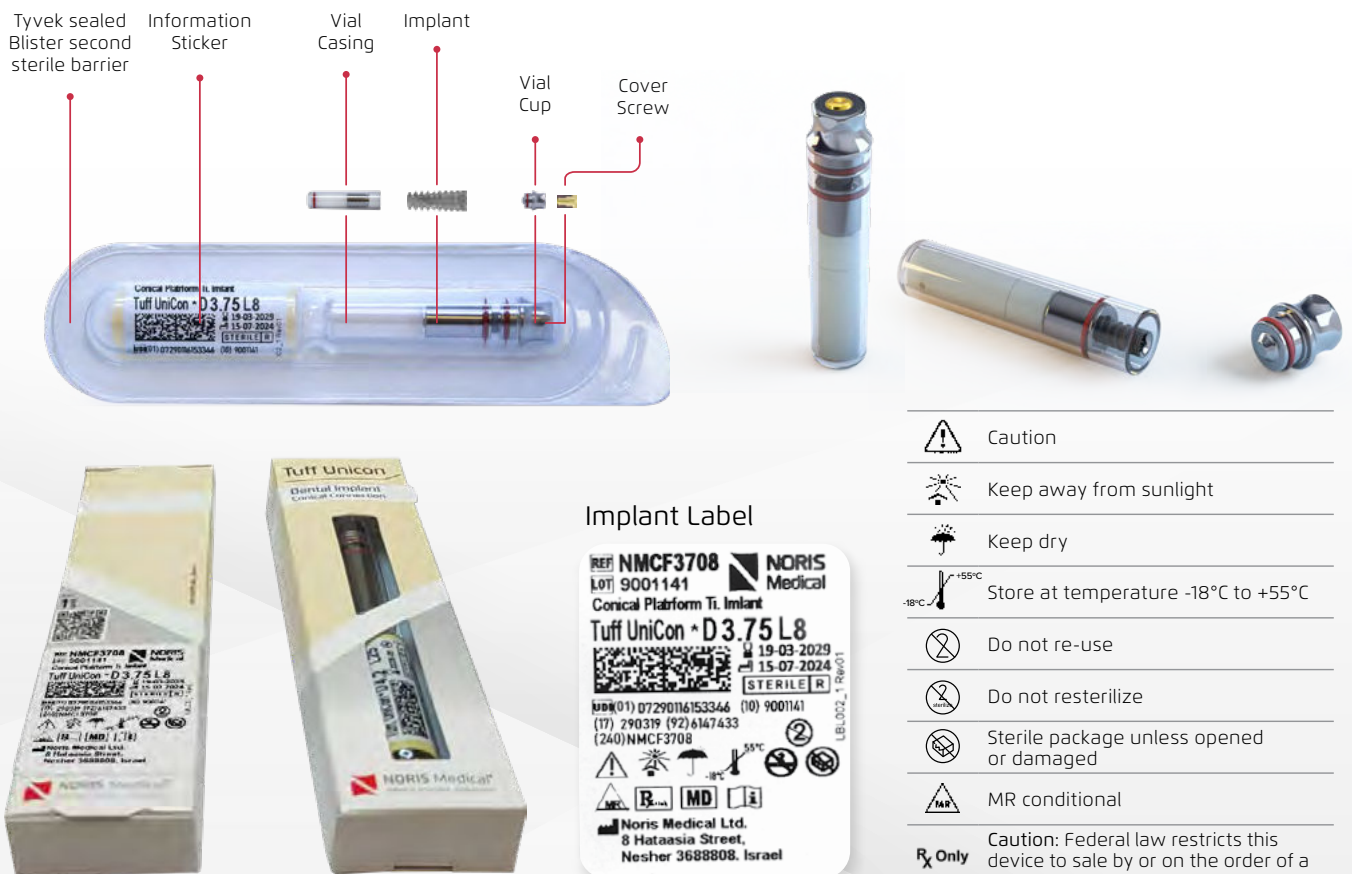
# IMPLANT PACKAGE

## General recommendation

- The Conical Platform Tuff UniCon implant is supplied in a sterile carrier-free package.
- A sterile blister package is enclosed within the outer cardboard box.
- The blister package houses a sealed vial containing the implant, secured with a vial cup.
- Placed in the blister is a comprehensive implant label detailing crucial product information, including the reference number (REF), implant type, description, and dimensions.
- The implant label bears additional information such as the LOT number and other pertinent data to facilitate product identification and manufacturing traceability.
- For optimal record-keeping, it is recommended that the implant label be adhered to the patient's medical record within the healthcare provider's clinical documentation system.

## Sterile implant PACKAGE

### CARRIER FREE IMPLANT PACKAGING



### Implant Label



- ⚠ Caution
- ☀ Keep away from sunlight
- ☂ Keep dry
- 🌡 Store at temperature -18°C to +55°C
- ⊗ Do not re-use
- ⊗ Do not re-sterilize
- ⊗ Sterile package unless opened or damaged
- ⚠ MR conditional
- ⚠ **Rx Only** Caution: Federal law restricts this device to sale by or on the order of a licensed healthcare practitioner
- MD Medical device
- STERILE R Sterilized using irradiation
- 📖 Consult accompanying documents
- 📅 Use by date
- 📅 Date of Manufacture

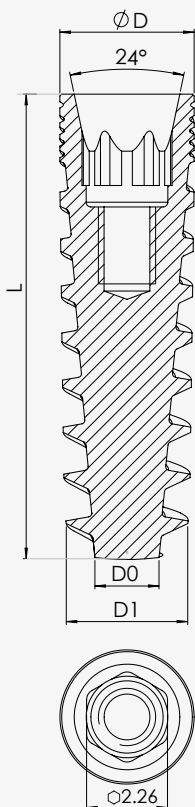
# CLASSIC SERIES | TUFF UniCon





## Bone Level Implant

Bone Types	All bone types
Prosthetics Platform	Conical Connection
Design Features	<ul style="list-style-type: none"> <li>• Condensing variable threads design</li> <li>• Apically tapered threads and tapered core body</li> <li>• Double thread design with large step</li> <li>• Double flute design</li> <li>• Stable and strong implant-abutment connection</li> <li>• Comprehensive prosthetic line for all diameters</li> </ul>
Clinical Benefits	<ul style="list-style-type: none"> <li>• Self tapping</li> <li>• High primary stability</li> <li>• Minimal drilling</li> <li>• Fast insertion – optimal for soft bone</li> <li>• Immediate implant placement or immediate function</li> <li>• Suitable for extraction sockets</li> <li>• Improved bone preservation</li> </ul>
Conical connection clinical benefit	<ul style="list-style-type: none"> <li>• Mechanical and Biological Benefits</li> <li>• Strong and stable connection due to load distribution</li> <li>• Tight implant-abutment fit &amp; Minimal micro-movements</li> </ul>

### ORDERING INFORMATION



Ø D (mm)	Ø D0 (mm)	Ø D1 (mm)	L (mm)	REF	Cover Screw
3.25	1.7	2.35	10	NMCF3210	 NMCS5001
			11.5	NMCF3211	
			13	NMCF3213	
			16	NMCF3216	
3.5	1.7	2.75	8	NMCF3508	 NMCS5002
			10	NMCF3510	
			11.5	NMCF3511	
			13	NMCF3513	
			16	NMCF3516	
3.75	1.8	3.1	18	NMCF3518	
			8	NMCF3708	
			10	NMCF3710	
			11.5	NMCF3711	
			13	NMCF3713	
4.2	2.1	3.5	16	NMCF3716	
			18	NMCF3718	
			8	NMCF4208	
			10	NMCF4210	
5	2.6	4.2	11.5	NMCF4211	
			13	NMCF4213	
			16	NMCF4216	
			18	NMCF4218	
5.5	3.1	4.7	8	NMCF5008	
			10	NMCF5010	
			11.5	NMCF5011	
			13	NMCF5013	
			16	NMCF5016	
			8	NMCF5508	
			10	NMCF5510	
			11.5	NMCF5511	
			13	NMCF5513	
			16	NMCF5516	

# RECOMMENDED DRILL PROTOCOL

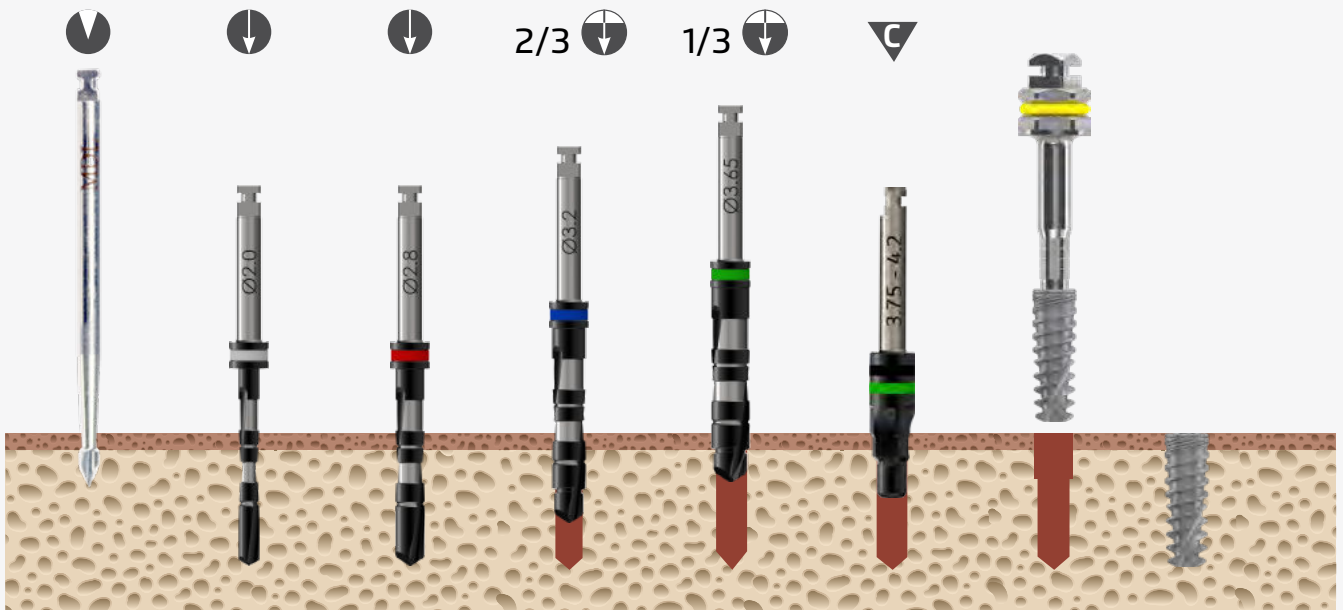
## Straight and Step Drills

Drill Diameter [mm]		Ø1.9	Ø1.5	Ø2.0	Ø2.8	Ø3.2	Ø3.65	Ø4.2	Ø5.2	ØCS 5-6
Drill Speed [RPM]		1200-1500	900-1200	900-1200	800-1000	500-700	400-700	400-600	400-600	400-600
IMPLANT DIAMETER	Ø3.25	Soft Bone	→		→	→	→	→	→	→
		Hard Bone	→	→	→	→	→	→	→	→ 1/3 →
	Ø3.5	Soft Bone	→		→	→	→	→	→	→
		Hard Bone	→	→	→	→	→	→	→	→ 2/3 →
	Ø3.75	Soft Bone	→		→	→	→	→	→	→
		Hard Bone	→	→	→	→	→	→	→	→ 2/3 →
	Ø4.2	Soft Bone	→		→	→	→	→	→	→
		Hard Bone	→	→	→	→	→	→	→	→ 1/3 →
	Ø5.0	Soft Bone	→		→	→	→	→	→	→
		Hard Bone	→	→	→	→	→	→	→	→ 1/3 →
	Ø5.5	Soft Bone	→		→	→	→	→	→	→
		Hard Bone	→	→	→	→	→	→	→	→ 1/2 →

	Drill to mark osteotomy site		Drill osteotomy to implant		Drill osteotomy partially according to implant		Drill through crestal bone only
--	------------------------------	--	----------------------------	--	--	--	---------------------------------

- ▲ The recommended drill protocol procedure should not replace the dentist's/surgeon's judgment.
- ▲ The implants may be loaded for immediate function when good primary stability (above 35 Ncm) has been achieved and with appropriate occlusal loading.

## DRILLING PROTOCOL LEGEND



	Drill to mark osteotomy site		Drill osteotomy to implant		Drill osteotomy partially according to implant		Drill through crestal bone only or with countersink to prepare the crest
--	------------------------------	--	----------------------------	--	--	--	--

# ACCESSORIES | PROSTHETIC WORKFLOW

HEALING CAPS	IMPRESSION TRANSFERS / ANALOGS / SCAN BODIES		
 Implant Healing Cap or  MU Healing Cap	 Implant Open Tray Transfer or  MU Open Tray Transfer	 Closed Tray Transfer or  MU Snap-On Transfer	 MU Scan Body or  Digital Analog
	 Analog		

## RECOMMENDED CLOSURE TORQUE

Hand tightening up to 15Ncm	Hand tightening up to 15Ncm
-----------------------------	-----------------------------

## PROSTHETIC DRIVERS

 NM-X1207   NM-X1210   NM-X1215	 NM-X1006   NM-X1007   NM-X1011	 NM-X1008   NM-X1009   NM-X1010
Ratchet Drivers 1.25mm	Manual Drivers 1.25mm	Motor Mount Drivers 1.25mm









# ACCESSORIES | PROSTHETIC WORKFLOW

CEMENT RETAINED RESTORATIONS	SCREW RETAINED RESTORATIONS	CAD/CAM	OVERDENTURE RESTORATIONS
 <p>Temporary Abutment</p>	 <p>Straight Multi-Unit</p>		
<p>or</p>	<p>or</p>		
 <p>Straight Abutment</p>	 <p>Angled MULTI-UNIT</p>	 <p>MU Ti Base</p>	 <p>Flat Attachment</p>
<p>or</p>			
 <p>Angle Abutment</p>			

## RECOMMENDED CLOSURE TORQUE

30Ncm	<p><b>Abutment:</b> 30Ncm  <b>Sleeve on MU:</b> 15Ncm</p>	30Ncm
-------	---	-------

## MULTI-UNIT DRIVERS

  <p>NM-X1016    NM-X1017</p>	   <p>NM-X7006    NM-X7007    NM-X7011</p>	   <p>NM-X7008    NM-X7009    NM-X7010</p>
<p>Ratchet Driver          ⌀ 2.0mm</p>	<p>Manual Drivers          ☆ 1.25mm</p>	<p>Motor Mount Drivers          ☆ 1.25mm</p>

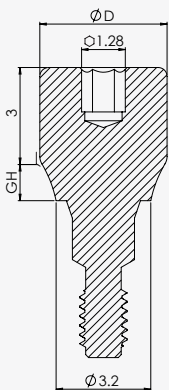
# PROSTHETIC PRODUCTS | HEALING CAPS



DESIGN FEATURES	<ul style="list-style-type: none"> <li>• Wide range of gingival heights and diameters to fit all prosthetic products</li> <li>• Gold anodized to represent Conical Connection platform</li> <li>• Anatomical concave design</li> </ul>
CLINICAL BENEFITS	<ul style="list-style-type: none"> <li>• Allows healing of the surrounding soft tissue</li> <li>• Support the healing process</li> <li>• Prevent Gum Overgrowth</li> <li>• Reduce Risk of Infection</li> </ul>
MATERIAL	Titanium Alloy (Ti-6Al-4V ELI)

## ORDERING INFORMATION

Diameter (mm)	GH (mm)				
	1.5	2.5	3.5	4.5	5.5
4.3					
	NMCH1001	NMCH1002	NMCH1003	NMCH1004	NMCH1005
4.8					
	NMCH1101	NMCH1102	NMCH1103	NMCH1104	
5.2					
	NMCH1201	NMCH1202	NMCH1203	NMCH1204	NMCH1205

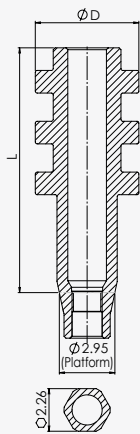


# ACCESSORIES | IMPRESSION TRANSFERS







DESIGN FEATURES	<ul style="list-style-type: none"> <li>• Close Tray and Open Tray</li> <li>• Available in short, high, narrow and wide sizes</li> <li>• Gold anodized to represent Conical Connection platform</li> </ul>
CLINICAL BENEFITS	<ul style="list-style-type: none"> <li>• Open-tray impression transfers for high accuracy</li> <li>• Close-tray impression transfers for places with less space</li> <li>• Non-hexed open-tray impression transfers are perfect for transferring multiple angled implants</li> </ul>
MATERIAL	Titanium Alloy (Ti-6Al-4V ELI)

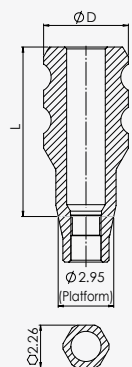
## ORDERING INFORMATION



### Open Tray

Short Transfer			Long Wide Transfer		
Transfer	Ø D (mm)	L (mm)	Transfer	Ø D (mm)	L (mm)
	4.75	9		5.5	13
NMCT4001			NMCT4002		
					
NMCS4002			NMCS4003		

### Close Tray



Short Transfer			Long Slim Transfer			Long Transfer		
Transfer	Ø D (mm)	L (mm)	Transfer	Ø D (mm)	L (mm)	Transfer	Ø D (mm)	L (mm)
	4.5	9		3.85	13		4.5	13
NMCT4101			NMCT4102			NMCT4103		
								
NMCS4001						NMCS4002		

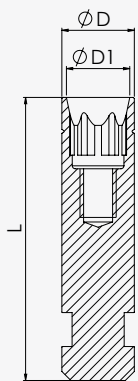
Transfers screws are included with each transfer above & available separately

# PROSTHETIC PRODUCTS |

## IMPLANT ANALOGS




DESIGN FEATURES	<ul style="list-style-type: none"> <li>• Gold anodized to represent Conical Connection platform</li> <li>• Anatomical concave design</li> </ul>
BENEFITS	Implant analog for cast model
MATERIAL	Titanium Alloy (Ti-6Al-4V ELI)

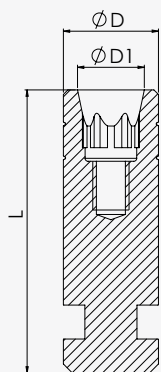


### ORDERING INFORMATION


#### Narrow Implant Analog

Analog	Ø D (mm)	Ø D1 (mm)	L (mm)
 NMCT6004	3.2	2.8	12.5

For Ø3.25 implant



#### Implant Analog

Analog	Ø D (mm)	Ø D1 (mm)	L (mm)
 NMCT6005	4.2	2.95	12.5

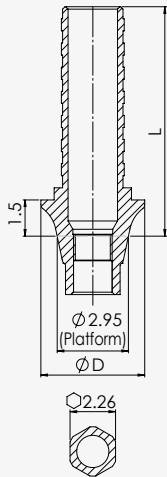
For Ø3.5, Ø3.75, Ø4.2, Ø5.0, Ø5.5 implants


# CEMENT RETAINED RESTORATIONS | TEMPORARY ABUTMENTS

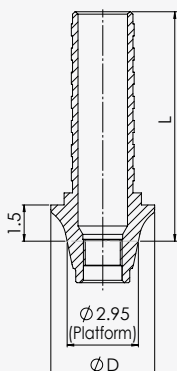


DESIGN FEATURES	<ul style="list-style-type: none"> <li>• Gold anodized to represent Conical Connection platform</li> <li>• For bridge or crown restoration</li> <li>• Deep retention groove</li> <li>• Anatomical concave design</li> </ul>
CLINICAL BENEFITS	<ul style="list-style-type: none"> <li>• High acrylic retention</li> <li>• For single crown or bridge restoration</li> </ul>
MATERIAL	Titanium Alloy (Ti-6Al-4V ELI)


## ORDERING INFORMATION



Temporary Abutment		
Straight	L (mm)	Ø D (mm)
	9.5	4.3
NMCA5001		



Non-Engage Temporary Abutment		
Straight	L (mm)	Ø D (mm)
	9.5	4.3
NMCA5002		

	NMCS7301	
---	----------	--

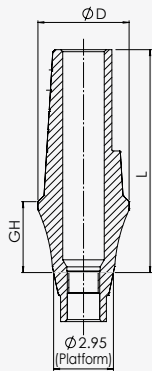
Included with all abutments above & available separately

# CEMENT RETAINED RESTORATIONS | CEMENT RETAINED ABUTMENTS



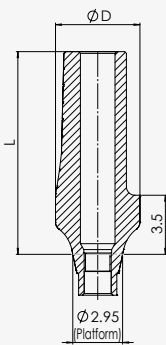
DESIGN FEATURES	<ul style="list-style-type: none"> <li>• Gold anodized to represent Conical Connection platform</li> </ul>
CLINICAL BENEFITS	<ul style="list-style-type: none"> <li>• Cement retained abutments</li> <li>• For dentist/technician customization</li> <li>• Wide range of emergence profile abutment options</li> </ul>
MATERIAL	Titanium Alloy (Ti-6Al-4V ELI)

## ORDERING INFORMATION



L (mm)	9	10	11	12
GH (mm)	1.5	2.5	3.5	4.5

Diameter  
Ø 4.5 (mm)



L (mm)	9	12
--------	---	----

Diameter  
Ø 5 (mm)



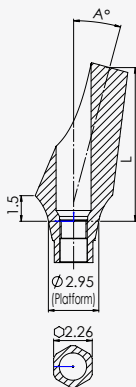
## Abutment Angular GH (mm)

Angle°	9	11
--------	---	----

15°



25°



NMCS7301

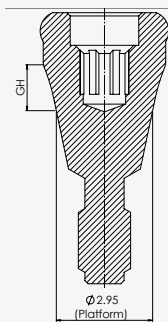
Included with all abutments above & available separately

# OVERDENTURE RESTORATIONS | FLAT ATTACHMENTS

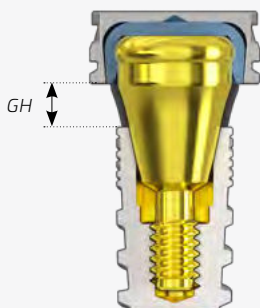


DESIGN FEATURES	<ul style="list-style-type: none"> <li>• Flat attachment</li> <li>• Range of heights.</li> <li>• Components – metal house, wide range of retentive inserts</li> <li>• Gold anodized to represent Conical Connection platform</li> </ul>
CLINICAL BENEFITS	<ul style="list-style-type: none"> <li>• Attachments for overdenture restoration</li> <li>• Range of gingival heights</li> <li>• Range of retention strength</li> </ul>
MATERIAL	Titanium Alloy (Ti-6Al-4V ELI)

## ORDERING INFORMATION



GH (mm)					
0.5	1	2	3	4	5
NMCT1100	NMCT1101	NMCT1102	NMCT1103	NMCT1104	NMCT1105

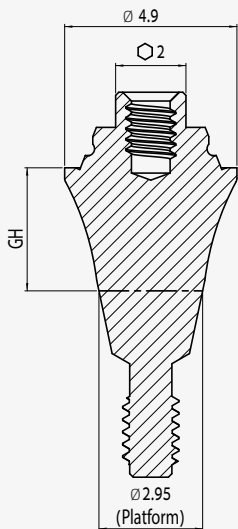


Set NM-T3099						
Metal House	Retentive inserts					Protective Disk
	Extra Soft Nylon	Soft Nylon	Standard Nylon	High Retention Nylon	Laboratory	
NM-T3010	NM-T3015	NM-T3016	NM-T3017	NM-T3018	NM-T3019	NM-T1824

# SCREW RETAINED RESTORATIONS | STRAIGHT MULTI-UNIT ABUTMENTS

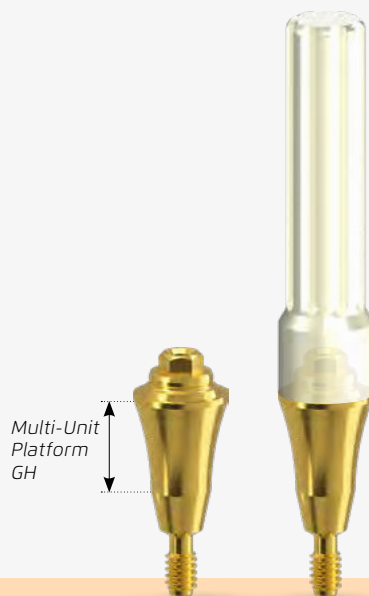


DESIGN FEATURES	<ul style="list-style-type: none"> <li>• Gold anodized to represent Conical Connection platform</li> <li>• Same MUA platform as Internal Hex MUA</li> <li>• Anatomical emergence profile</li> </ul>
CLINICAL BENEFITS	<ul style="list-style-type: none"> <li>• Retrievability                     <ul style="list-style-type: none"> <li>- Can be unscrewed and thus allows better maintenance</li> </ul> </li> <li>• Flexibility                     <ul style="list-style-type: none"> <li>- To match implant position</li> <li>- Allows parallelization</li> </ul> </li> <li>• Optimal esthetic results</li> </ul>
MATERIAL	Titanium Alloy (Ti-6Al-4V ELI)



## ORDERING INFORMATION

Multi-Unit Platform GH (mm)				
1.5	2.5	3.5	4.5	5.5
NMCA7301	NMCA7302	NMCA7303	NMCA7304	NMCA7305
Abutment Carry-on handle Included with all products above				

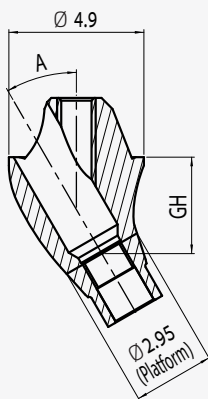




# SCREW RETAINED RESTORATIONS | ANGLED MULTI-UNIT ABUTMENTS



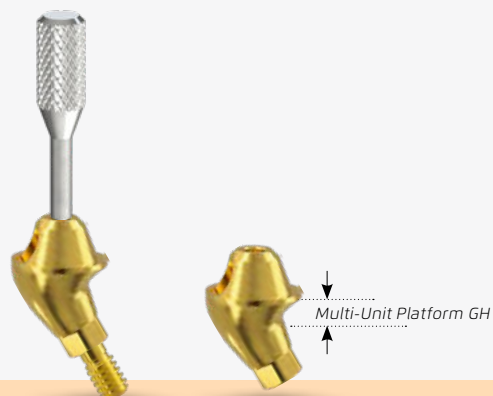
DESIGN FEATURES	<ul style="list-style-type: none"> <li>• Gold anodized to represent Conical Connection platform</li> <li>• Same MUA platform as Internal Hex MUA</li> <li>• Anatomical emergence profile</li> <li>• Anatomical concave design</li> </ul>
CLINICAL BENEFITS	<ul style="list-style-type: none"> <li>• Retrievability                     <ul style="list-style-type: none"> <li>- Can be unscrewed and thus allows better maintenance</li> </ul> </li> <li>• Flexibility                     <ul style="list-style-type: none"> <li>- To match implant position</li> <li>- Allows parallelization</li> </ul> </li> <li>• Optimal esthetic results</li> </ul>
MATERIAL	Titanium Alloy (Ti-6Al-4V ELI)

## ORDERING INFORMATION



Multi-Unit Platform GH (mm)				
Angle°	2	2.5	3.5	
17°	 NMCA7312		 NMCA7313	
30°		 NMCA7332	 NMCA7333	
	 NMCS7301	 Abutment Carry-on handle		

Included with all products above



# SCREW RETAINED RESTORATIONS |

## MULTI-UNIT COMPONENTS

### Healing Caps



Healing Caps  
 Ø 4.9mm H 4.8mm  
 NM-H7101



Healing Caps  
 Ø 4.9mm H 7.0mm  
 NM-H7102



Screw \*  
 NM-S7102

### Transfers



Open Tray  
 Ø 4.9mm H 11mm  
 NM-T7111



Screw \*  
 L 13mm  
 NM-S7111



Snap-On Cap for Ball Transfer  
 Ø 4.8mm H 11mm  
 NM-T4402



Closed Tray  
 Ø 4.9mm H 8mm  
 NM-T7102



Screw \*  
 NM-S7102

### Analog

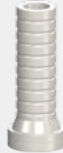


Analog  
 Ø 4.9mm  
 NM-T7151

### Abutments



Universal Abutment  
 Ø 4.9mm H 12mm  
 NM-T7121



Castable Abutment  
 Ø 4.9mm H 12mm  
 NM-C7121



Screw \*  
 NM-S7102

\*Screw - Included with the product above & available separately

### CAD-CAM COMPONENTS

#### Titanium Bases



Ø 4.9mm H 4.5mm  
 NM-C7124



Ø 5.2mm H 4.5mm  
 NM-C7126



Screw\*  
 NM-S7102

#### Scan Bodies



Ø 4.9mm H 10mm  
 NM-C9210

#### Digital Analog for Multi-Unit



H 7mm  
 NMDT7151

# SCREW RETAINED RESTORATIONS | MULTI-UNIT DRIVERS

## Straight Multi-Unit Ratchet Drivers



Short Driver  
⊙ 2.0mm L 6mm

NM-X1016



Long Driver  
⊙ 2.0mm L 10mm

NM-X1017

## Straight Multi-Unit Motor Mounts



Short Motor Mount  
⊙ 2.0mm L 20mm

NM-X1120



Long Motor Mount  
⊙ 2.0mm L 25mm

NM-X1125

## Star Hex. Drivers



Star Hex. Driver  
⚡ 1.25mm L 7mm

NM-X7006



Star Hex. Driver  
⚡ 1.25mm L 14mm

NM-X7007



Star Hex. Driver  
⚡ 1.25mm L 20mm

NM-X7011

## Star Hex. Motor Mounts



Motor Mount  
⚡ 1.25mm L 20mm

NM-X7008



Motor Mount  
⚡ 1.25mm L 25mm

NM-X7009



Motor Mount  
⚡ 1.25mm L 35mm

NM-X7010



# SCREW RETAINED RESTORATIONS | MULTI-UNIT PROTOCOL

## ASSEMBLY OF A STRAIGHT MULTI-UNIT BASE

1

Attach the straight Multi-Unit base to the implant by using the plastic handle.



2

Remove the handle.



3

Tighten the base to 30Ncm with the Multi-Unit driver.



## ASSEMBLY OF ANGLED MULTI-UNIT BASE

1

Choose the optimal Multi-Unit per required restoration angle and gingiva height.

2

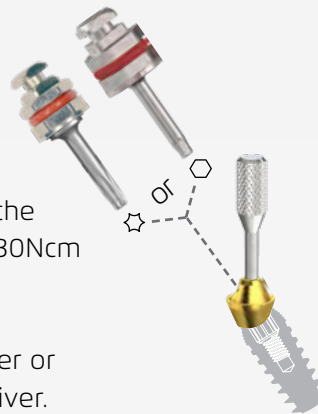
Attach the Multi-Unit base to the appropriate angle.



Use the handle as an indicator for the final screw emergence.

3

Tighten the base to 30Ncm with the 1.25mm Hex driver or a Star driver.

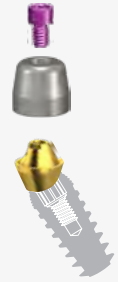


4

Remove the handle by unscrewing it.



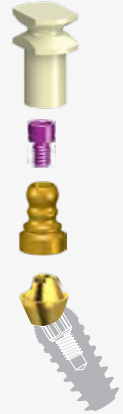
## HEALING CAPS ASSEMBLY



## IMPRESSION

Choose the desired impression technique:

For closed tray choose Snap-On-transfer.



For open tray technique choose conventional transfer.

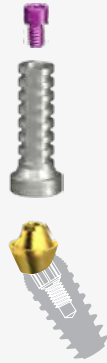


# SCREW RETAINED RESTORATIONS | MULTI-UNIT PROTOCOL

## IMMEDIATE LOADING (FABRICATION OF THE TEMPORARY BRIDGE)

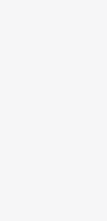
1

Assemble the Titanium Sleeve on the Multi-Unit base and tighten the screw to 15Ncm.



2

Attach the pre-prepared provisional acrylic prosthesis.



## LABORATORY PHASE

1

Mount the Plastic Sleeve on the Multi-Unit analog and tighten with the screw.



2

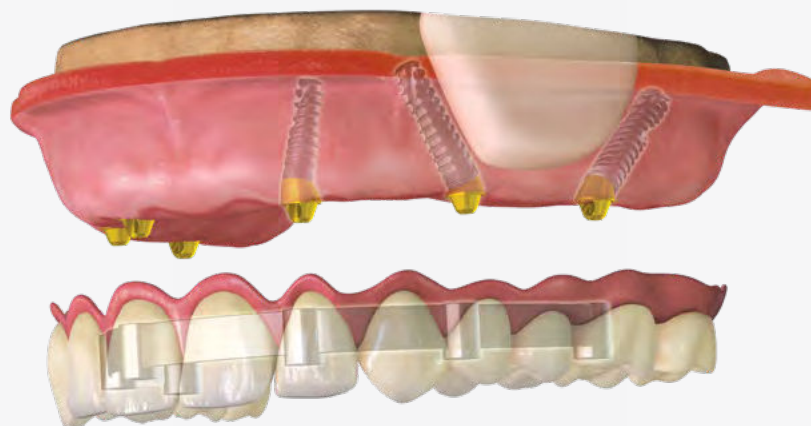
Splint the sleeves.

3

Carve the Sleeves to the desired shape.

4

Invest and cast the metal frame of the prosthesis.





# INSTRUMENTS | DRILLS








## MARKING DRILL

Ø D (mm)	REF	
1.9	NM-D3410	







## NARROW DRILLS

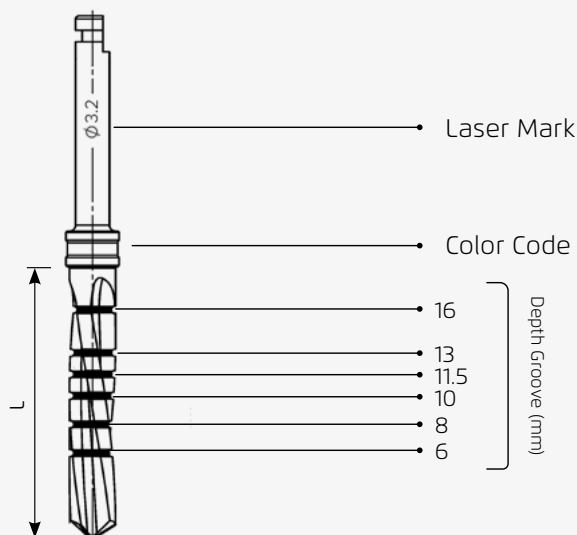
Ø D (mm)	REF	
1.2	NMCD2312	
1.5	NMCD2315	

## STANDARD DRILLS

Ø D (mm)	L (mm)	REF	
2.0	19	NMCD1220	
2.5		NMCD1225	
2.8		NMCD1228	
3.2		NMCD1232	
3.65		NMCD1236	
4.2		NMCD1242	
5.2		NMCD1252	





## DRILLS COLOR CODE

Ø 2.0	
Ø 2.8	
Ø 3.2	
Ø 3.65	
Ø 4.2	
Ø 5.2	



# INSTRUMENTS | DRILLS


## STEP DRILLS

Ø D (mm)	L (mm)	REF	
2.8-3.2	19	NMSD4032	
3.2-3.65		NMSD4036	
3.65-4.2		NMSD4042	
4.2-5.2		NMSD4052	


## SHORT DRILLS

Ø D (mm)	L (mm)	REF	
2.0	13	NM-D1420	
2.8		NM-D1428	
3.2		NM-D1432	
3.65		NM-D1436	
4.2		NM-D1442	
5.2		NM-D1452	

## COUNTERSINK DRILL



Ø D (mm)	REF	
3.8-4.2	NMCD1034	

## EXTENSION DRILL




Ø D (mm)	REF	
-	NM-D3412	

# INSTRUMENTS | TOOLS


## TISSUE PUNCH

Ø D (mm)	REF	
4.2	NM-D2642	
5.0	NM-D2650	



## BONE PROFILERS

BONE PROFILER MILL				
Ø D (mm)	Angle (°)	REF		
4.0	90	NM-D3371		
5.0	30	NM-D3372		
6.5	45	NM-D3373		

## GUIDED PIN FOR BONE PROFILER MILL




	NMCX3371	
--	----------	---

## TREPHINE DRILLS

Ø D (mm)	REF	
3.0-4.0	NM-D2030	
4.0-5.0	NM-D2040	



# INSTRUMENTS | IMPLANTS DRIVERS

## DRIVER $\square$ 2.26MM - SELF HOLDING

L (mm)	REF	
10	NMHX3610	
15	NMHX3615	
20	NMHX3620	






## MOTOR MOUNT DRIVER $\square$ 2.26MM - SELF HOLDING

L (mm)	REF	
20	NMHX1620	
28	NMHX1628	


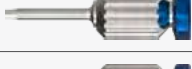
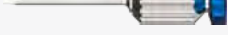


# INSTRUMENTS | PROSTHETIC DRIVERS


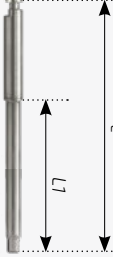


## RATCHET DRIVERS 1.25 (mm)

L (mm)	REF	
7	NM-X1207	
10	NM-X1210	
15	NM-X1215	

## MANUAL DRIVERS 1.25 (mm)



L (mm)	REF	
7	NM-X1006	
14	NM-X1007	
20	NM-X1011	

## MOTOR MOUNT DRIVERS 1.25 (mm)



L (mm)	L1 (mm)	REF		
20	7	NM-X1008		
25	12	NM-X1009		
35	22	NM-X1010		

# INSTRUMENTS | MULTI-UNIT DRIVERS




## MULTI-UNIT RATCHET DRIVERS 2.0 (mm)

L (mm)	REF	
6	NM-X1016	
10	NM-X1017	




## MULTI-UNIT MOTOR MOUNT DRIVERS 2.0 (mm)

L (mm)	REF	
20	NM-X1120	
25	NM-X1125	




## STAR HEX. RATCHET DRIVERS 1.25 (mm)

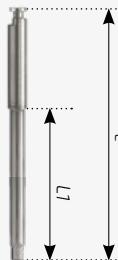
L (mm)	REF	
7	NM-X7307	
10	NM-X7310	
15	NM-X7315	

## STAR HEX. MANUAL DRIVERS 1.25 (mm)

L (mm)	REF	
7	NM-X7006	
14	NM-X7007	
20	NM-X7011	




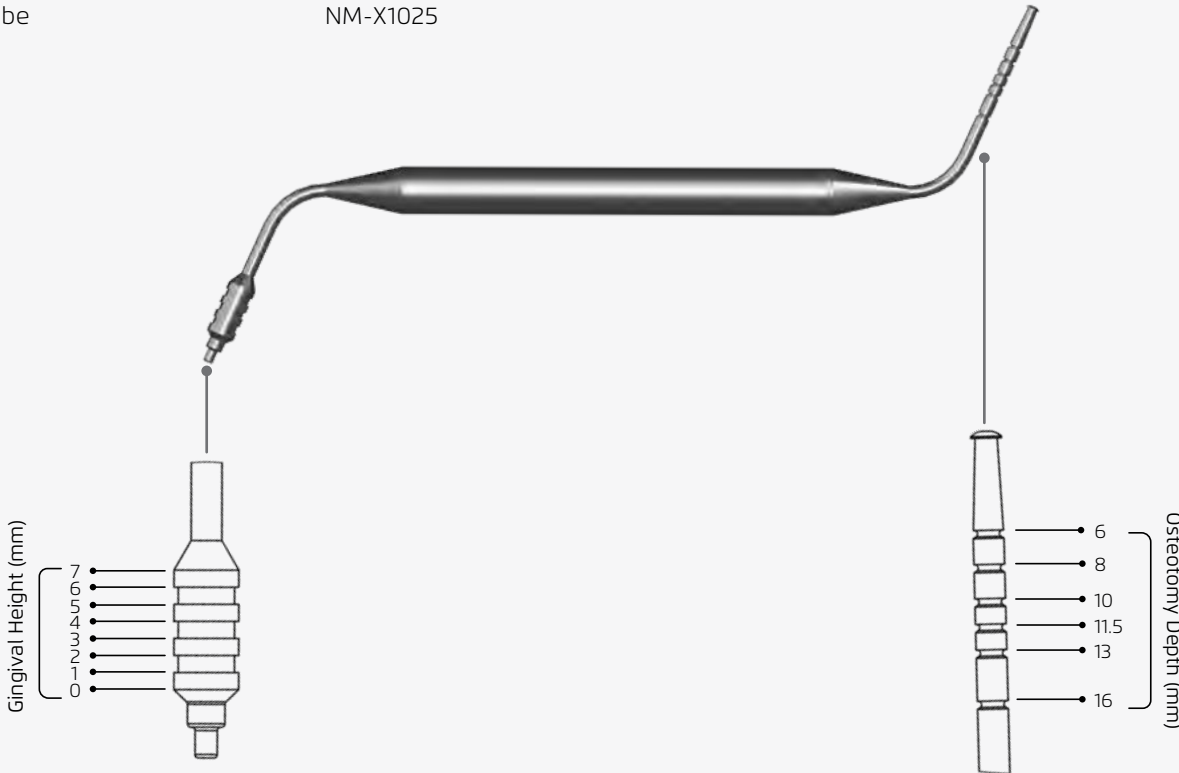
## STAR HEX. MOTOR MOUNT DRIVERS 1.25 (mm)

L (mm)	L1 (mm)	REF	
20	7	NM-X7008	
25	12	NM-X7009	
35	22	NM-X7010	



# MANUAL INSTRUMENTS


## HAND INSTRUMENTS

	REF	
Torque Ratchet	NM-X1021	
Pro Ratchet Torque	NM-X1050	
Surgical Screw Driver	NM-X1023	
Depth Probe	NM-X1025	 <p>The image shows a Depth Probe instrument with two measurement scales. The left scale is labeled 'Gingival Height (mm)' and has markings at 0, 1, 2, 3, 4, 5, 6, and 7. The right scale is labeled 'Osteotomy Depth (mm)' and has markings at 6, 8, 10, 11.5, 13, and 16. The instrument has a long, curved handle and a thin, pointed tip.</p>

The product is intended solely for indication purposes; the depth markings are approximate (mm is an estimation).

# GUIDE PINS

## STRAIGHT GUIDE PIN FOR BONE DRILLED OSTEOTOMY Ø2.0 (mm)

L (mm)	REF	
10	NM-X1026	
16	NM-X1027	

## ANGULATED GUIDE PIN Ø2.0 (mm)

Angle	L (mm)	REF	
17°	10	NM-X1302	
17°	16	NM-X1312	
30°	10	NM-X1304	
30°	16	NM-X1314	



# SETS | MINI SURGICAL SET BOX

## NMCX2210



### SET CONTAINS:

Drill, Countersink, $\varnothing$ 3.8-4.2mm	NMCD1034	Driver $\varnothing$ 1.25mm, L 15mm	NM-X1215
Marking Drill	NM-D3410	Driver $\varnothing$ 2.42mm, L 15mm	NMHX2615
Guide Pin, L 10mm	NM-X1026	Motor Mount $\varnothing$ 1.25, L 22mm	NM-X1008
Guide Pin, L 16mm	NM-X1027	Motor Mount $\varnothing$ 2.42, L 28mm	NMHX1015

### TOOLS/DRILL REQUIRED TO PLACE CONICAL CONNECTION IMPLANTS. CONSIDER TO ADD ALL OR SOME OF THE IMPLANT DRIVERS.

Driver Hex 2.26mm, L 10mm, Self Holding, SS.	NMHX3610
Driver Hex 2.26mm, L 15mm, Self Holding, SS.	NMHX3615
Driver Hex 2.26mm, L 20mm, Self Holding, SS.	NMHX3620
Motor Mount Driver Hex 2.26mm, L20mm, Self Holding, SS.	NMHX1620
Motor Mount Driver Hex 2.26mm, L28mm, Self Holding, SS.	NMHX1628
Drill, Narrow, $\varnothing$ 1.5mm	NMCD2315

# PRODUCTS LIST

NMCA		
NMCA7312	Angled Multi-Unit, Ø4.9, GH2.5, 17°	15
NMCA7332	Angled Multi-Unit, Ø4.9, GH2.5, 30°	15
NMCA7313	Angled Multi-Unit, Ø4.9, GH3.5, 17°	15
NMCA7333	Angled Multi-Unit, Ø4.9, GH3.5, 30°	15
NMCA3411	Cement Retained Abutment, Angular, Ø2.95, L11, 15°	12
NMCA3412	Cement Retained Abutment, Angular, Ø2.95, L11, 25°	12
NMCA3401	Cement Retained Abutment, Angular, Ø2.95, L9, 15°	12
NMCA3402	Cement Retained Abutment, Angular, Ø2.95, L9, 25°	12
NMCA4501	Cement Retained Abutment, Ø4.5, L9, GH1.5	12
NMCA4502	Cement Retained Abutment, Ø4.5, L9, GH2.5	12
NMCA4503	Cement Retained Abutment, Ø4.5, L9, GH3.5	12
NMCA4504	Cement Retained Abutment, Ø4.5, L9, GH4.5	12
NMCA5701	Cement Retained Abutment, Ø5, L12, GH3.5	12
NMCA5702	Cement Retained Abutment, Ø5, L12, GH4.5	12
NMCA7301	Straight Multi-Unit, Ø4.9, GH1.5	14
NMCA7302	Straight Multi-Unit, Ø4.9, GH2.5	14
NMCA7303	Straight Multi-Unit, Ø4.9, GH3.5	14
NMCA7304	Straight Multi-Unit, Ø4.9, GH4.5	14
NMCA7305	Straight Multi-Unit, Ø4.9, GH5.5	14
NMCA5002	Temporary Abutment, Non-Engage, Ø2.95, L9.5	11
NMCA5001	Temporary Abutment, Straight, Ø2.95, L9.5	11
NM-D		
NM-D3371	Bone Profiler Mill, Ø4.0, 90°	22
NM-D3372	Bone Profiler Mill, Ø5.0, 30°	2
NM-D3373	Bone Profiler Mill, Ø6.5, 45°	22
NM-D3412	Extension Drill, Ø2.0	28, 21
NM-D1420	Short Drill, Ø2.0	21
NM-D1428	Short Drill, Ø2.8	21
NM-D1432	Short Drill, Ø3.2	21
NM-D1436	Short Drill, Ø3.65	21
NM-D1442	Short Drill, Ø4.2	21
NM-D1452	Short Drill, Ø5.2	21
NM-D3410	Marking Drill	20, 28, 29
NM-D2642	Tissue Punch, Ø4.2	22
NM-D2650	Tissue Punch, Ø5.0	22

NM-D2030	Trephine Drill, Ø3.0-4.0	22
NM-D2040	Trephine Drill, Ø4.0-5.0	22
NMCD		
NMCD2312	Drill, Narrow, Ø1.2	20
NMCD2315	Drill, Narrow, Ø1.5	20, 28, 29
NMCD1225	Drill, Standard, Ø2.5	20
NMCD1034	Countersink, Ø3.8-4.2	21, 28, 29
NMCD1056	Countersink, Ø5.0-6.0	28
NMCD1220	Drill, Ø2.0	20, 28
NMCD1228	Drill, Ø2.8	20, 28
NMCD1232	Drill, Ø3.2	20, 28
NMCD1236	Drill, Ø3.65	20, 28
NMCD1242	Drill, Ø4.2	20, 28
NMCD1252	Drill, Ø5.2	20, 28
NMCT		
NMCT1100	Flat Attachment, GH0.5, Ø2.95	13
NMCT1101	Flat Attachment, GH1, Ø2.95	13
NMCT1102	Flat Attachment, GH2, Ø2.95	13
NMCT1103	Flat Attachment, GH3, Ø2.95	13
NMCT1104	Flat Attachment, GH4, Ø2.95	13
NMCT1105	Flat Attachment, GH5, Ø2.95	13
NMCT6004	Implant Analog, Narrow, Ø3.2, Ø2.8, L12.5	10
NMCT6005	Implant Analog, Ø4.2, Ø2.95, L12.5	10
NMCT4103	Impression Transfer, Closed Tray, Long, Ø2.95, L13	9
NMCT4101	Impression Transfer, Closed Tray, Short, Ø2.95, L4.5	9
NMCT4102	Impression Transfer, Open Tray, Long, Ø2.95, L13	9
NMCT4001	Impression Transfer, Open Tray, Short, Ø2.95, L4.75	9
NMCT4002	Impression Transfer, Open Tray, Wide, Ø2.95, L5.5	9
NM-T		
NM-T3010	Flat Attachment, Metal House, Extra Soft Nylon	13
NM-T3017	Flat Attachment, Metal House, High Retention Nylon	13
NM-T3019	Flat Attachment, Metal House, Laboratory	13
NM-T3018	Flat Attachment, Metal House, Protective Disk	13
NM-T3015	Flat Attachment, Metal House, Soft Nylon	13
NM-T3016	Flat Attachment, Metal House, Standard Nylon	13

NM-T7102	Multi-Unit Component, Closed Tray, Ø4.9, H8	16
NM-T7111	Multi-Unit Component, Open Tray, Ø4.9, H11	16
NM-T7121	Multi-Unit Component, Universal Abutment, Ø4.9, H12	16
NM-T7151	Multi-Unit Component, Analog, Ø4.9, H7	16
<b>NMCX</b>		
NMCX3371	Guided Pin for Bone Profiler Mill	22
<b>NM-X</b>		
NM-X1302	Angulated Guide Pin, Ø2.0, 17°, L10	27
NM-X1312	Angulated Guide Pin, Ø2.0, 17°, L16	27
NM-X1304	Angulated Guide Pin, Ø2.0, 30°, L10	27
NM-X1314	Angulated Guide Pin, Ø2.0, 30°, L16	27
NM-X1021	Torque Ratchet	26, 28
NM-X1023	Surgical Screw Driver	26
NM-X1026	Straight Guide Pin, Ø2.0, L10	27
NM-X1027	Straight Guide Pin, Ø2.0, L16	27, 28, 29
NM-X1025	Depth Probe	26
NM-X1050	Pro Ratchet Torque	26
NM-X1215	Ratchet Driver, 1.25mm, L15mm	6, 24, 28, 29
NM-X1008	Motor Mount Driver, 1.25mm, L22mm	6, 24, 28, 29
NM-X1017	Multi-Unit Ratchet Driver, 2.0mm, L10	7, 17, 28
NM-X1125	Multi-Unit Driver, Motor Mount, Long, 2.0mm, L25	17, 25
NM-X1120	Multi-Unit Driver, Motor Mount, Short, 2.0mm, L20	17, 25
NM-X7008	Multi-Unit Driver, Motor Mount, Star Hex, 1.25mm, L20	7, 17, 25
NM-X7009	Multi-Unit Driver, Motor Mount, Star Hex, 1.25mm, L25	7, 17, 25
NM-X7010	Multi-Unit Driver, Motor Mount, Star Hex, 1.25mm, L35	7, 17, 25
NM-X1016	Multi-Unit Driver, 2.0mm, L6	7, 17, 28
NM-X7007	Multi-Unit Driver, Star Hex. Manual, 1.25mm, L14	7, 17, 25
NM-X7011	Multi-Unit Driver, Star Hex, Manual, 1.25mm, L20	7, 17, 25
NM-X7006	Multi-Unit Driver, Star Hex, Manual, 1.25mm, L7	7, 17, 25
NM-X1007	Prosthetic Driver, Manual, 1.25mm, L14	6, 24, 28
NM-X1011	Prosthetic Driver, Manual, 1.25mm, L20	6, 24, 28
NM-X1006	Prosthetic Driver, Manual, 1.25mm, L7	6, 24, 28

NM-X1009	Prosthetic Driver, Motor Mount, 1.25mm, L25	6, 24
NM-X1010	Prosthetic Driver, Motor Mount, 1.25mm, L35	6, 24
NM-X1210	Prosthetic Driver, Ratchet, 1.25mm, L10	6, 24
NM-X1215	Prosthetic Driver, Ratchet, 1.25mm, L15	6, 24, 28, 29
NM-X1207	Prosthetic Driver, Ratchet, 1.25mm, L7	6, 24, 28, 29
<b>NMCH</b>		
NMCH1201	Healing Cap, GH1.5, Ø3.2	8
NMCH1001	Healing Cap, GH1.5, Ø4.3	8
NMCH1101	Healing Cap, GH1.5, Ø5.2	8
NMCH1202	Healing Cap, GH2.5, Ø3.2	8
NMCH1002	Healing Cap, GH2.5, Ø4.3	8
NMCH1102	Healing Cap, GH2.5, Ø5.2	8
NMCH1203	Healing Cap, GH3, Ø3.2	8
NMCH1003	Healing Cap, GH3, Ø4.3	8
NMCH1103	Healing Cap, GH3, Ø5.2	8
NMCH1204	Healing Cap, GH4.5, Ø3.2	8
NMCH1004	Healing Cap, GH4.5, Ø4.3	8
NMCH1104	Healing Cap, GH4.5, Ø5.2	8
NMCH1205	Healing Cap, GH5.5, Ø3.2	8
NMCH1005	Healing Cap, GH5.5, Ø4.3	8
<b>NMHX</b>		
NMHX3610	Implant Driver, Self-Holding, 2.26mm, L10	23, 28, 29
NMHX3615	Implant Driver, Self-Holding, 2.26mm, L15	23, 28, 29
NMHX3620	Implant Driver, Self-Holding, 2.26mm, L20	23, 28, 29
NMHX2615	Driver, 2.42mm, L15mm	28, 29
NMHX1620	Motor Mount Driver Hex, 2.26mm, L20mm	23, 28, 29
NMHX1015	Motor Mount, 2.42mm, L28mm	29, 28
NMHX1628	Motor Mount Driver, Self-Holding, 2.26mm, L28	23, 28, 29
<b>NMCS</b>		
NMCS4001	Impression Transfer, Closed Tray, Long, Ø2.95, L9	9
NMCS4003	Impression Transfer, Closed Tray, Wide, Ø2.95, L13	9
NMCS4002	Impression Transfer, Open Tray, Long, Ø2.95, L9	9
NMCS7301	Abutment Screw, CP, Ti.	11, 12, 15
<b>NM-C</b>		
NM-C7121	Multi-Unit Component, Castable Abutment, Ø4.9, H12	15

NM-C9210	Multi-Unit Component, Scan Body, Ø4.9, H10	16
NM-C7124	Multi-Unit Component, Titanium Base, Ø4.9, H4.5	16
NM-C7126	Multi-Unit Component, Titanium Base, Ø5.2, H4.5	16
NM-H		
NM-H7101	Multi-Unit Component, Healing Cap, Ø4.9, H4.8	16
NM-H7102	Multi-Unit Component, Healing Cap, Ø4.9, H7.0	16
NMSD		
NMSD4032	Step Drill, Ø2.8-3.2	21
NMSD4036	Step Drill, Ø3.2-3.65	21
NMSD4042	Step Drill, Ø3.65-4.2	21
NMSD4052	Step Drill, Ø4.2-5.2	21
NMCF		
NMCF3210	TUFF UniCon, Ø3.25, L10	4
NMCF3211	TUFF UniCon, Ø3.25, L11.5	4
NMCF3213	TUFF UniCon, Ø3.25, L13	4
NMCF3216	TUFF UniCon, Ø3.25, L16	4
NMCF3510	TUFF UniCon, Ø3.5, L10	4
NMCF3511	TUFF UniCon, Ø3.5, L11.5	4
NMCF3513	TUFF UniCon, Ø3.5, L13	4
NMCF3516	TUFF UniCon, Ø3.5, L16	4
NMCF3518	TUFF UniCon, Ø3.5, L18	4
NMCF3508	TUFF UniCon, Ø3.5, L8	4
NMCF3708	TUFF UniCon, Ø3.75, L8	4
NMCF3710	TUFF UniCon, Ø3.75, L10	4
NMCF3711	TUFF UniCon, Ø3.75, L11.5	4
NMCF3713	TUFF UniCon, Ø3.75, L13	4
NMCF3716	TUFF UniCon, Ø3.75, L16	4
NMCF3718	TUFF UniCon, Ø3.75, L18	4
NMCF4208	TUFF UniCon, Ø4.2, L8	4
NMCF4210	TUFF UniCon, Ø4.2, L10	4
NMCF4211	TUFF UniCon, Ø4.2, L11.5	4
NMCF4213	TUFF UniCon, Ø4.2, L13	4
NMCF4216	TUFF UniCon, Ø4.2, L16	4
NMCF4218	TUFF UniCon, Ø4.2, L18	4
NMCF5008	TUFF UniCon, Ø5.0, L8	4
NMCF4208	TUFF UniCon, Ø5.0, L10	4
NMCF5011	TUFF UniCon, Ø5.0, L11	4
NMCF5013	TUFF UniCon, Ø5.0, L13	4
NMCF5016	TUFF UniCon, Ø5.0, L16	4
NMCF5508	TUFF UniCon, Ø5.5, L8	4
NMCF5510	TUFF UniCon, Ø5.5, L10	4
NMCF5511	TUFF UniCon, Ø5.5, L11	4
NMCF5513	TUFF UniCon, Ø5.5, L13	4
NMCF5516	TUFF UniCon, Ø5.5, L16	4

ENHANCING SOFT TISSUE MANAGEMENT,  
AESTHETIC EXCELLENCE  
AND LONG-TERM STABILITY





**NORIS Medical®**  
Dental Implant Solutions

LBL006CP REV.2024-1 EN | © 2024 NORIS MEDICAL

*We can make you*  
***Smile***



[www.norismedical.com](http://www.norismedical.com)

